



LADEKRANE
LOADER CRANES

HLK 66-801 HP



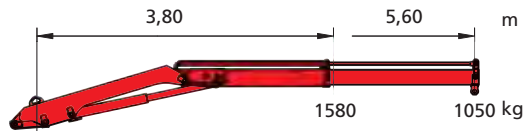
Ladekrane

loader cranes

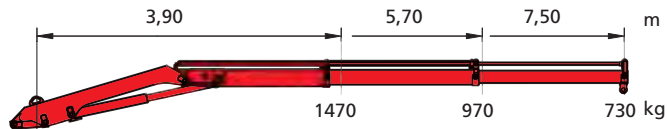


MKG Maschinen- & Kranvertrieb GmbH
 D-21256 Handeloh - Germany
 ph. +49.4188.8998304 · fax 8998306
 e-mail: info@mkg-export.de · www.mkg-export.com

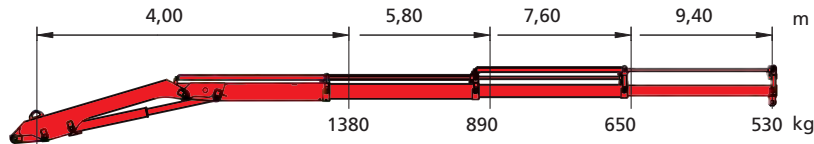
HLK 66



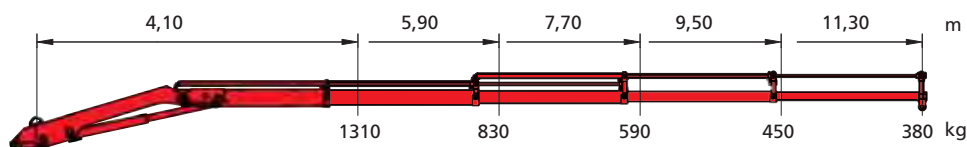
a1 5,60 m max. hydraulische Reichweite (Arm gestreckt) / max. outreach (horizontal position) .



a2 7,50 m max. hydraulische Reichweite (Arm gestreckt) / max. outreach (horizontal position)

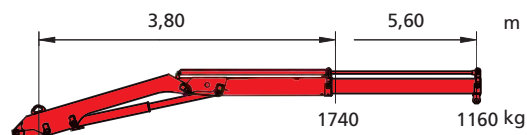


a3 9,40 m max. hydraulische Reichweite (Arm gestreckt) / max. outreach (horizontal position)

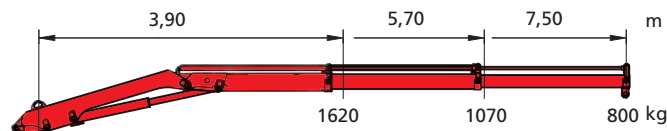


a4 11,34 m max. hydraulische Reichweite (Arm gestreckt) / max. outreach (horizontal position)

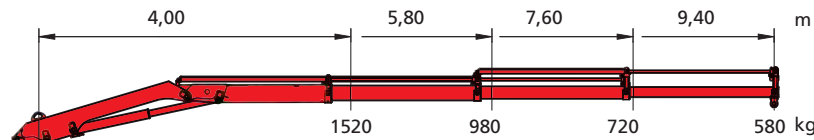
HLK 71 HP



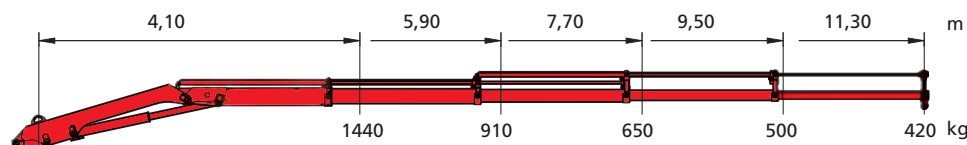
a1 5,60 m max. hydraulische Reichweite (Arm gestreckt) / max. outreach (horizontal position) .



a2 7,50 m max. hydraulische Reichweite (Arm gestreckt) / max. outreach (horizontal position)

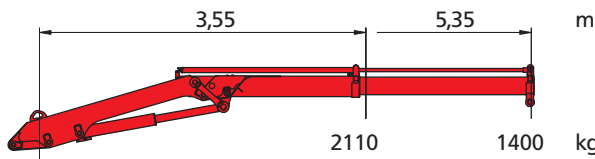


a3 9,40 m max. hydraulische Reichweite (Arm gestreckt) / max. outreach (horizontal position)

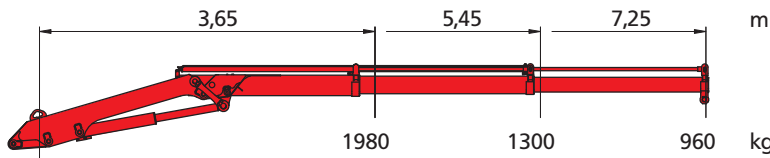


a4 11,34 m max. hydraulische Reichweite (Arm gestreckt) / max. outreach (horizontal position)

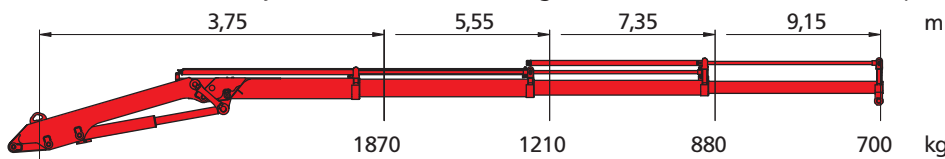
HLK 76



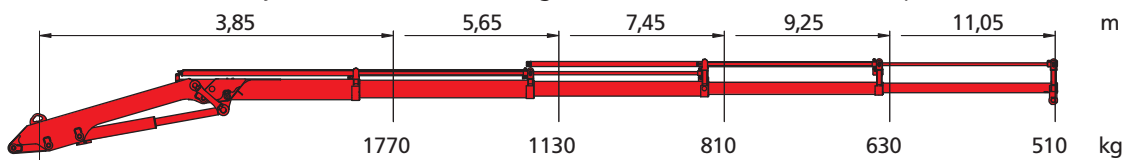
a1 5,42 m max. hydraulische Reichweite (Arm gestreckt) / max. outreach (horizontal position)



a2 7,32 m max. hydraulische Reichweite (Arm gestreckt) / max. outreach (horizontal position)

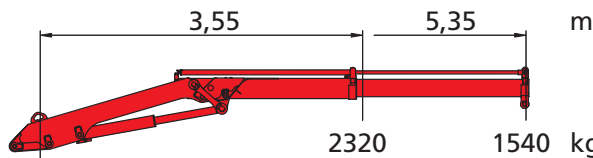


a3 9,22 m max. hydraulische Reichweite (Arm gestreckt) / max. outreach (horizontal position)

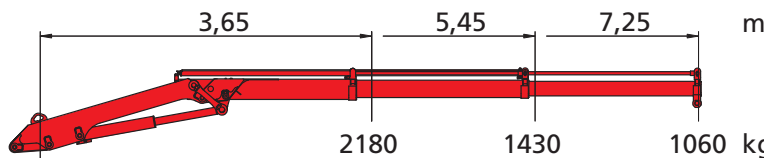


a4 11,12 m max. hydraulische Reichweite (Arm gestreckt) / max. outreach (horizontal position)

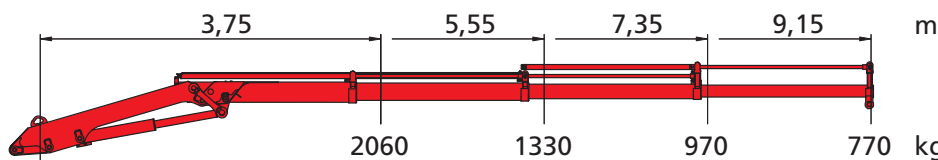
HLK 86 HP



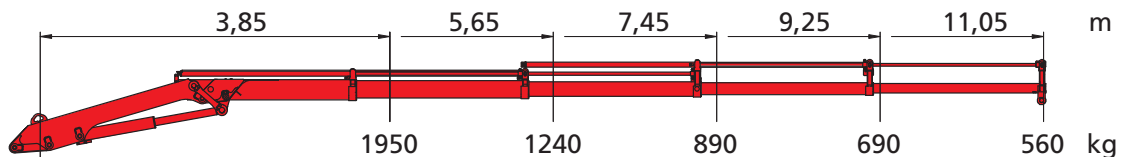
a1 5,42 m max. hydraulische Reichweite (Arm gestreckt) / max. outreach (horizontal position)



a2 7,32 m max. hydraulische Reichweite (Arm gestreckt) / max. outreach (horizontal position)

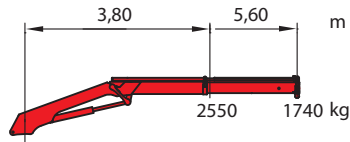


a3 9,22 m max. hydraulische Reichweite (Arm gestreckt) / max. outreach (horizontal position)

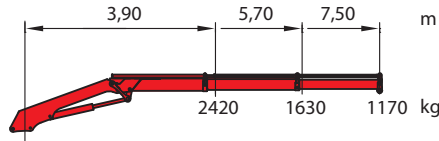


a4 11,12 m max. hydraulische Reichweite (Arm gestreckt) / max. outreach (horizontal position)

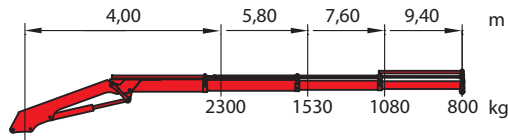
HLK 96



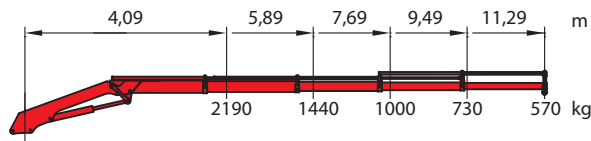
a1 5,74 m max. hydraulische Reichweite (Arm gestreckt) / max. outreach (horizontal position)



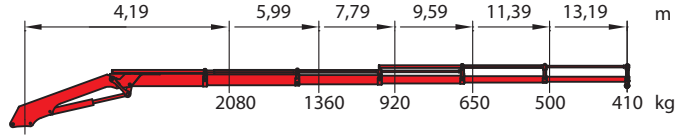
a2 7,64 m max. hydraulische Reichweite (Arm gestreckt) / max. outreach (horizontal position)



a3 9,54 m max. hydraulische Reichweite (Arm gestreckt) / max. outreach (horizontal position)

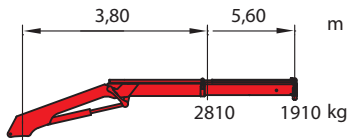


a4 11,43m max. hydraulische Reichweite (Arm gestreckt) / max. outreach (horizontal position)

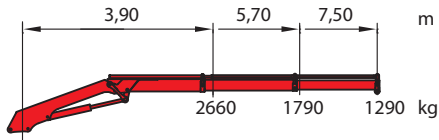


a5 13,33 m max. hydraulische Reichweite (Arm gestreckt) / max. outreach (horizontal position)

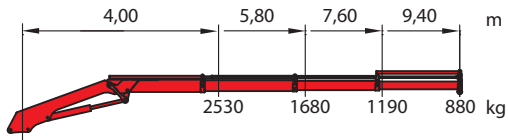
HLK 106 HP



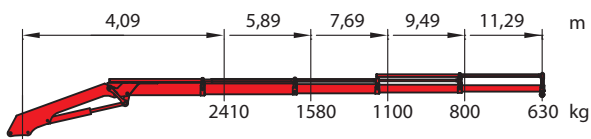
a1 5,74 m max. hydraulische Reichweite (Arm gestreckt) / max. outreach (horizontal position)



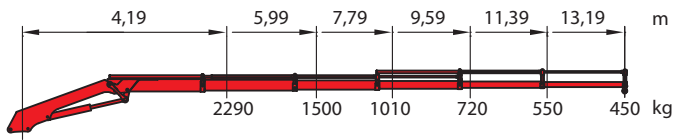
a2 7,64 m max. hydraulische Reichweite (Arm gestreckt) / max. outreach (horizontal position)



a3 9,54 m max. hydraulische Reichweite (Arm gestreckt) / max. outreach (horizontal position)

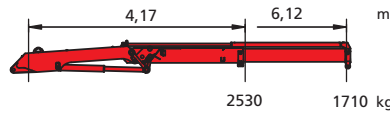


a4 11,43m max. hydraulische Reichweite (Arm gestreckt) / max. outreach (horizontal position)

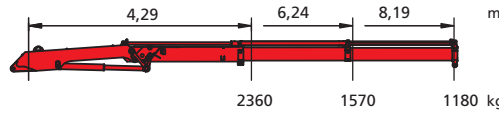


a5 13,33 m max. hydraulische Reichweite (Arm gestreckt) / max. outreach (horizontal position)

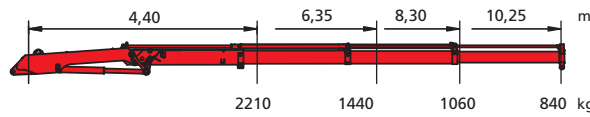
HLK 111



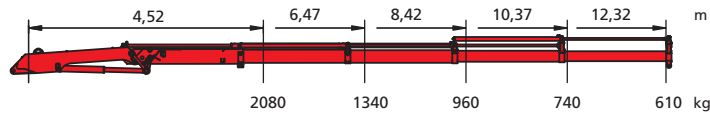
a1 6,12 m max. hydraulische Reichweite (Arm gestreckt) / max. outreach (horizontal position)



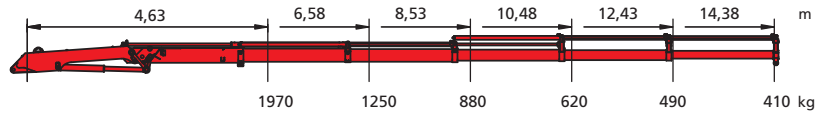
a2 8,19 m max. hydraulische Reichweite (Arm gestreckt) / max. outreach (horizontal position)



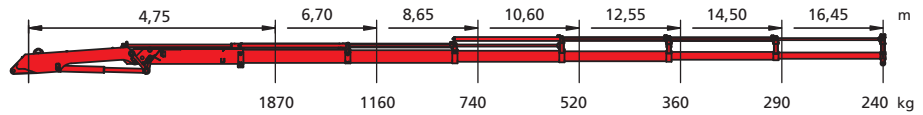
a3 10,25 m max. hydraulische Reichweite (Arm gestreckt) / max. outreach (horizontal position)



a4 12,32 m max. hydraulische Reichweite (Arm gestreckt) / max. outreach (horizontal position)

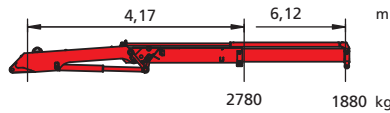


a5 14,38 m max. hydraulische Reichweite (Arm gestreckt) / max. outreach (horizontal position)

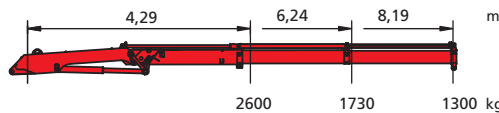


a6 16,45 m max. hydraulische Reichweite (Arm gestreckt) / max. outreach (horizontal position)

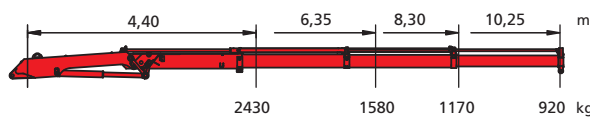
HLK 115 HP



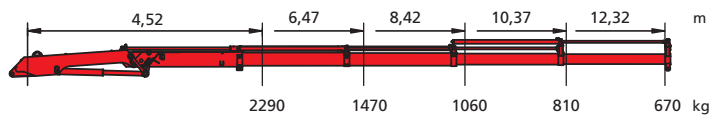
a1 6,12 m max. hydraulische Reichweite (Arm gestreckt) / max. outreach (horizontal position)



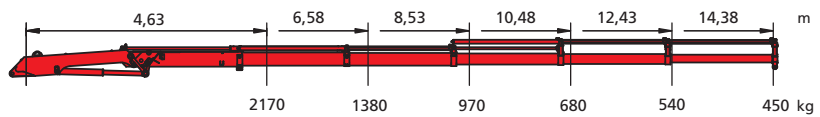
a2 8,19 m max. hydraulische Reichweite (Arm gestreckt) / max. outreach (horizontal position)



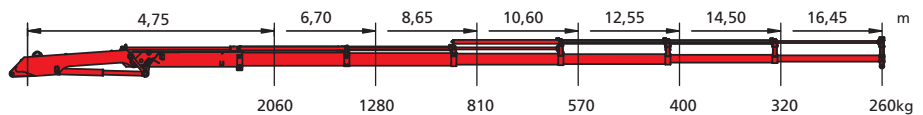
a3 10,25 m max. hydraulische Reichweite (Arm gestreckt) / max. outreach (horizontal position)



a4 12,32 m max. hydraulische Reichweite (Arm gestreckt) / max. outreach (horizontal position)

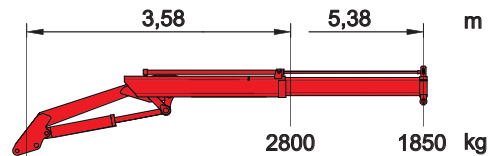


a5 14,38 m max. hydraulische Reichweite (Arm gestreckt) / max. outreach (horizontal position)

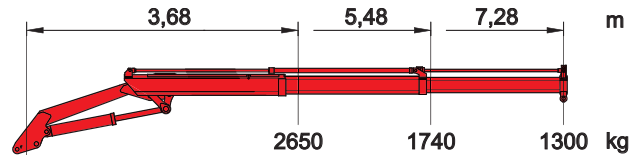


a6 16,45 m max. hydraulische Reichweite (Arm gestreckt) / max. outreach (horizontal position)

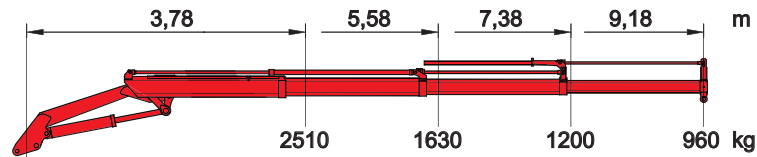
HLK 116



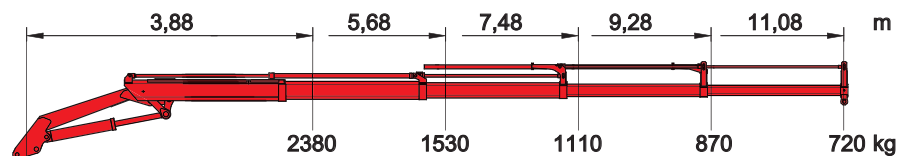
a1 5,51 m max. hydraulische Reichweite (Arm gestreckt) / max. outreach (horizontal position)



a2 7,41 m max. hydraulische Reichweite (Arm gestreckt) / max. outreach (horizontal position)

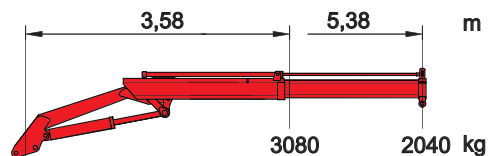


a3 9,32 m max. hydraulische Reichweite (Arm gestreckt) / max. outreach (horizontal position)

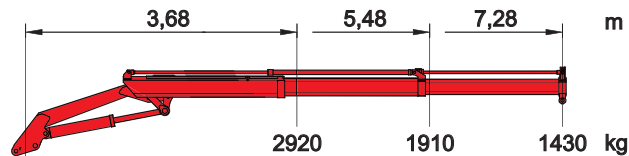


a4 11,22 m max. hydraulische Reichweite (Arm gestreckt) / max. outreach (horizontal position)

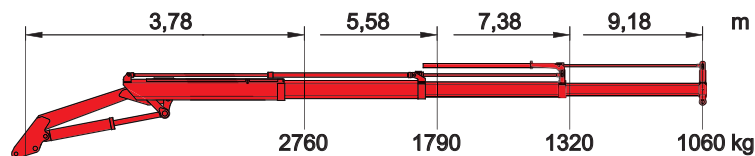
HLK 120 HP



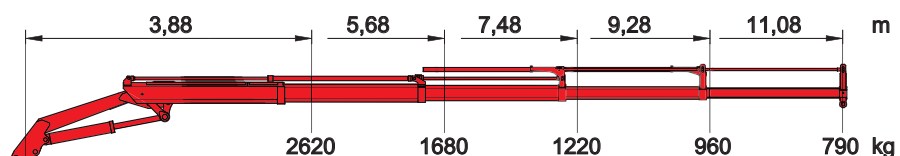
a1 5,51 m max. hydraulische Reichweite (Arm gestreckt) / max. outreach (horizontal position)



a2 7,41 m max. hydraulische Reichweite (Arm gestreckt) / max. outreach (horizontal position)

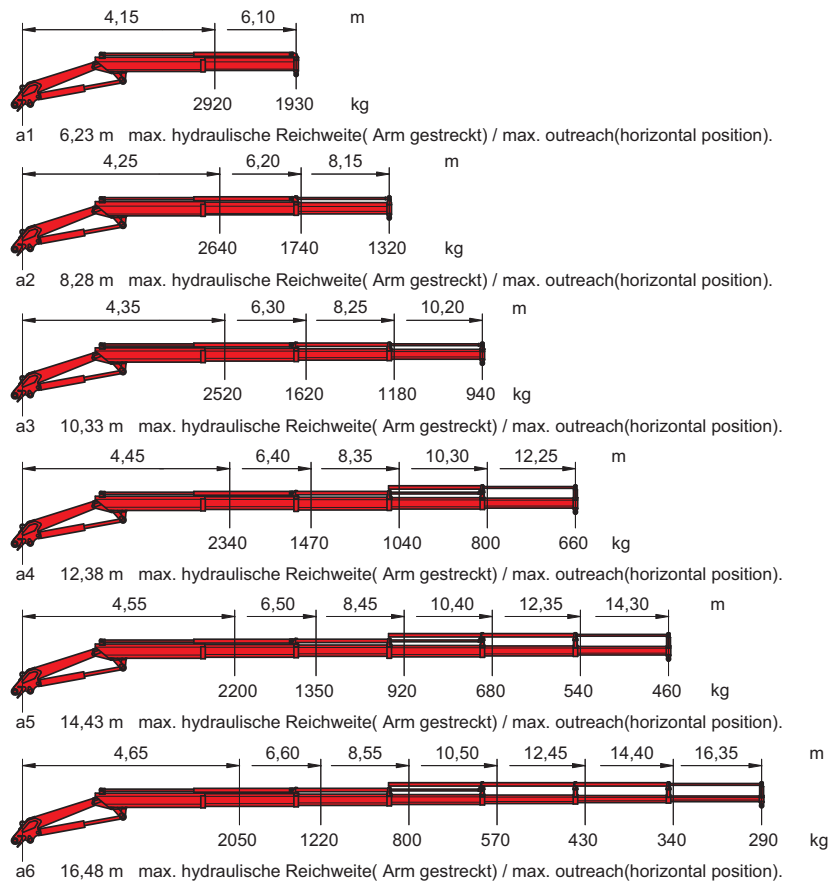


a3 9,32 m max. hydraulische Reichweite (Arm gestreckt) / max. outreach (horizontal position)

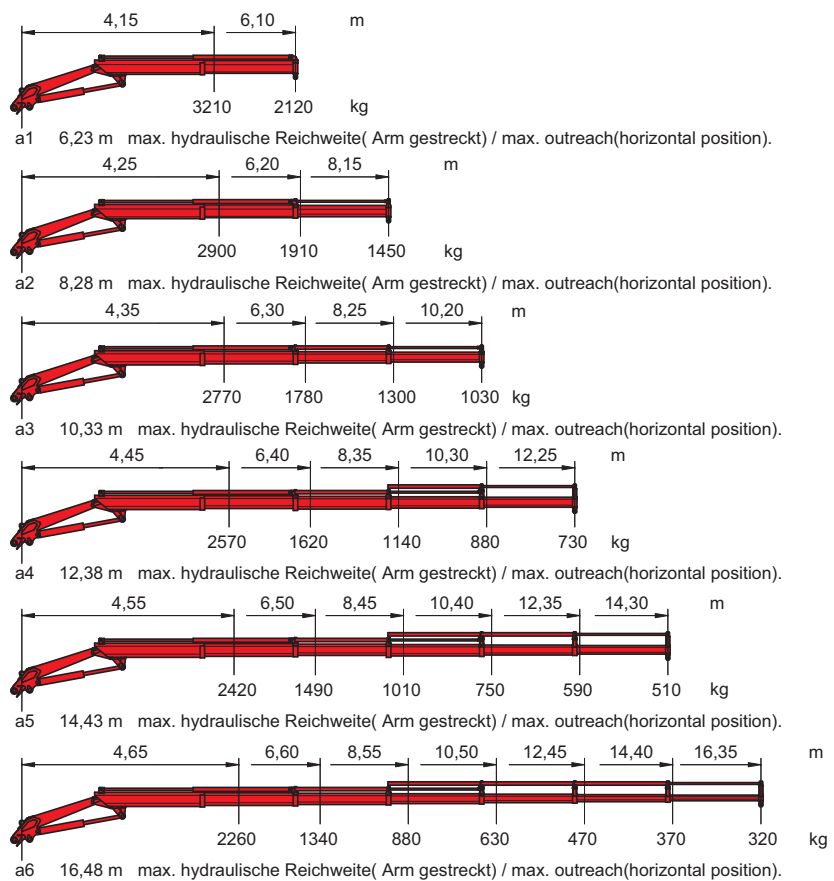


a4 11,22 m max. hydraulische Reichweite (Arm gestreckt) / max. outreach (horizontal position)

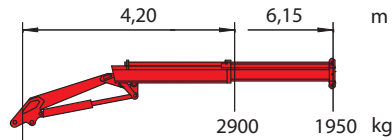
HLK 121



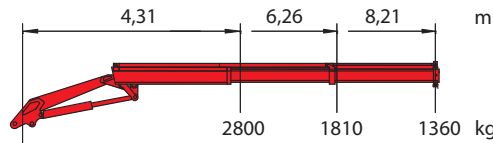
HLK 131 HP



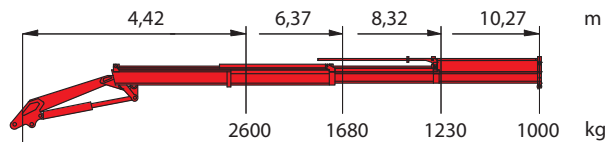
HLK 125



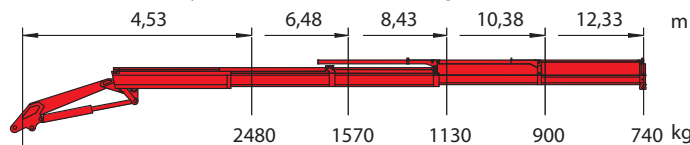
a1 6,29 m max. hydraulische Reichweite (Arm gestreckt) / max. outreach (horizontal position)



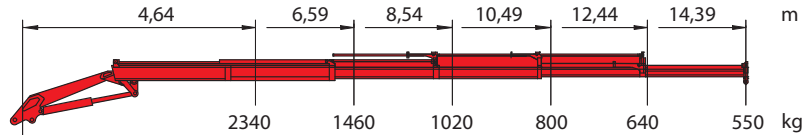
a2 8,35 m max. hydraulische Reichweite (Arm gestreckt) / max. outreach (horizontal position)



a3 10,41 m max. hydraulische Reichweite (Arm gestreckt) / max. outreach (horizontal position)

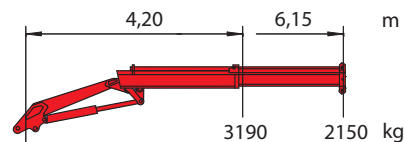


a4 12,47 m max. hydraulische Reichweite (Arm gestreckt) / max. outreach (horizontal position)

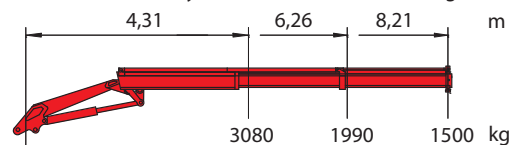


a5 14,53 m max. hydraulische Reichweite (Arm gestreckt) / max. outreach (horizontal position)

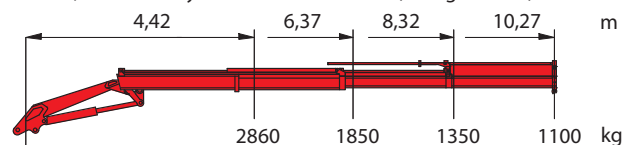
HLK 138 HP



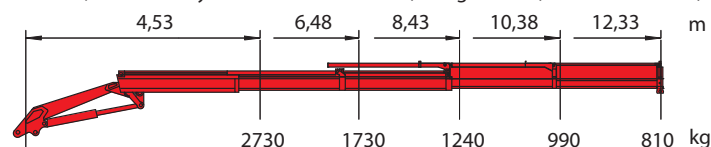
a1 6,29 m max. hydraulische Reichweite (Arm gestreckt) / max. outreach (horizontal position)



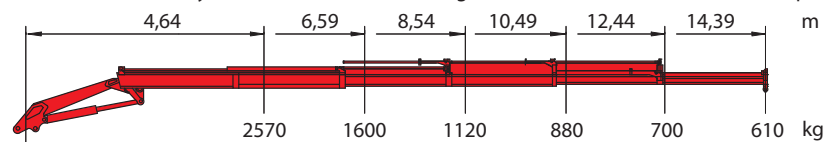
a2 8,35 m max. hydraulische Reichweite (Arm gestreckt) / max. outreach (horizontal position)



a3 10,41 m max. hydraulische Reichweite (Arm gestreckt) / max. outreach (horizontal position)

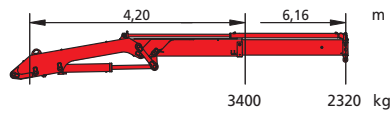


a4 12,47 m max. hydraulische Reichweite (Arm gestreckt) / max. outreach (horizontal position)

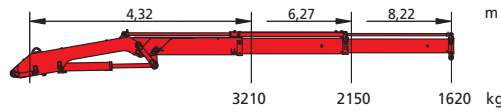


a5 14,53 m max. hydraulische Reichweite (Arm gestreckt) / max. outreach (horizontal position)

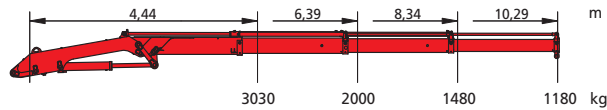
HLK 141



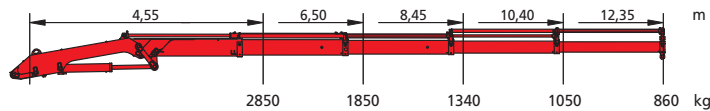
a1 6,19 m max. hydraulische Reichweite (Arm gestreckt) / max. outreach (horizontal position)



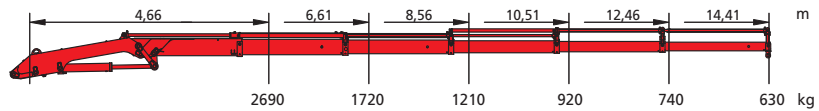
a2 8,25 m max. hydraulische Reichweite (Arm gestreckt) / max. outreach (horizontal position)



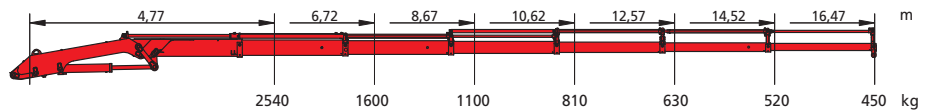
a3 10,32 m max. hydraulische Reichweite (Arm gestreckt) / max. outreach (horizontal position)



a4 12,38 m max. hydraulische Reichweite (Arm gestreckt) / max. outreach (horizontal position)

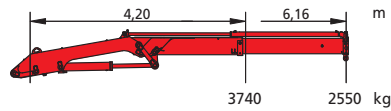


a5 14,44 m max. hydraulische Reichweite (Arm gestreckt) / max. outreach (horizontal position)

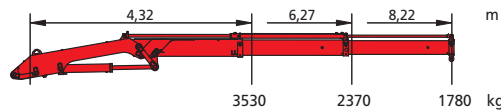


a6 16,50 m max. hydraulische Reichweite (Arm gestreckt) / max. outreach (horizontal position)

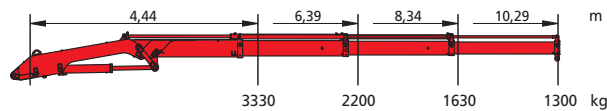
HLK 151 HP



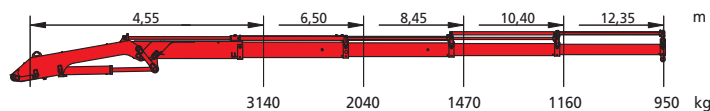
a1 6,19 m max. hydraulische Reichweite (Arm gestreckt) / max. outreach (horizontal position)



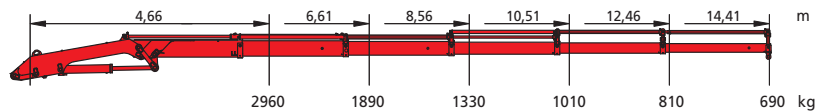
a2 8,25 m max. hydraulische Reichweite (Arm gestreckt) / max. outreach (horizontal position)



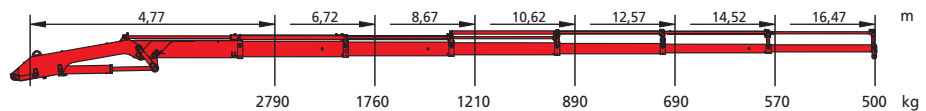
a3 10,32 m max. hydraulische Reichweite (Arm gestreckt) / max. outreach (horizontal position)



a4 12,38 m max. hydraulische Reichweite (Arm gestreckt) / max. outreach (horizontal position)

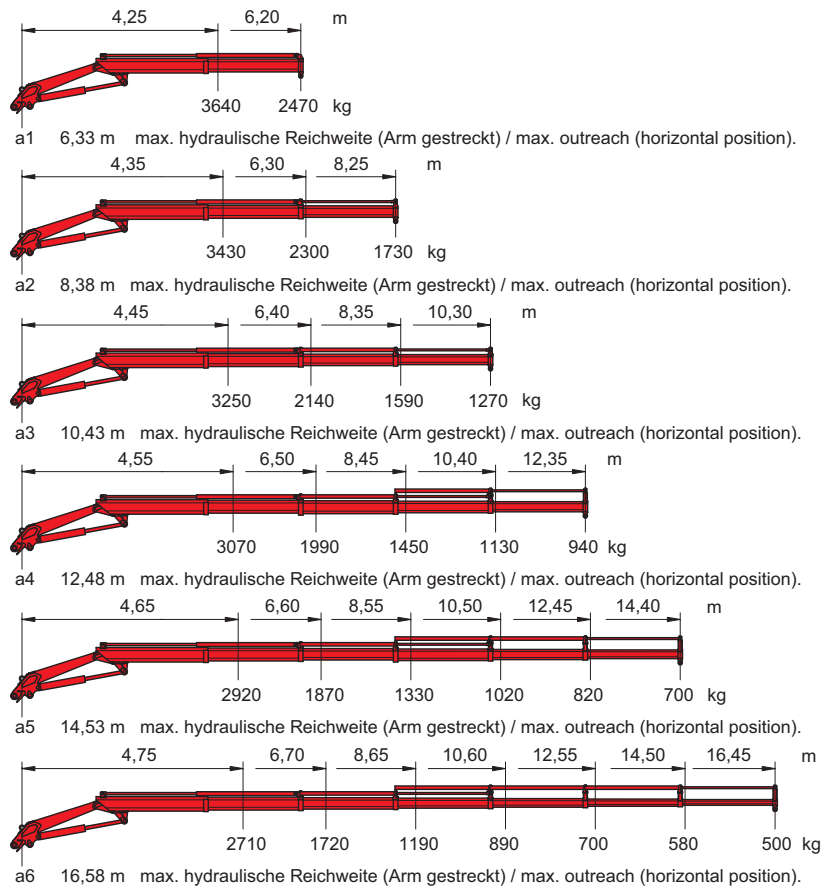


a5 14,44 m max. hydraulische Reichweite (Arm gestreckt) / max. outreach (horizontal position)

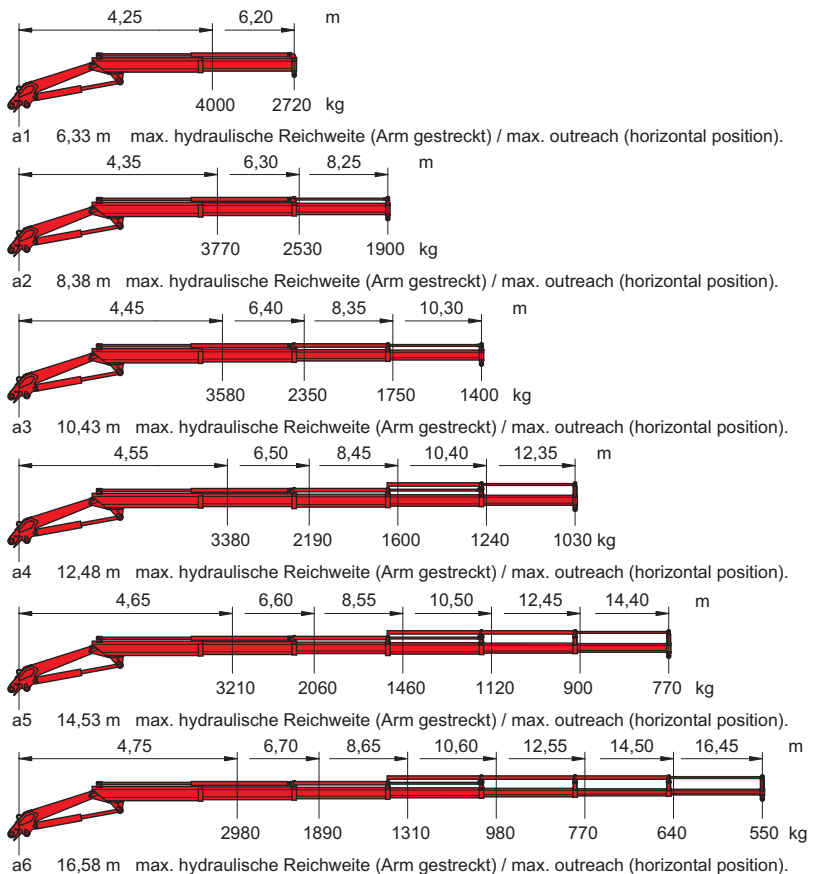


a6 16,50 m max. hydraulische Reichweite (Arm gestreckt) / max. outreach (horizontal position)

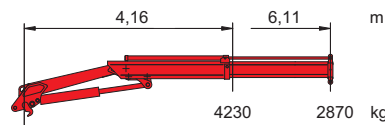
HLK 161



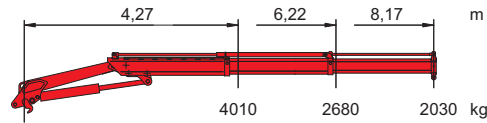
HLK 171 HP



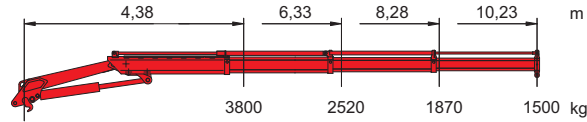
HLK 181



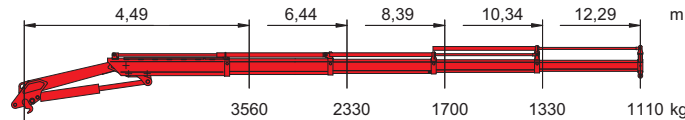
a1 6,19 m max. hydraulische Reichweite (Arm gestreckt) / max. outreach (horizontal position)



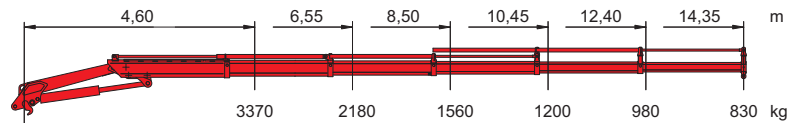
a2 8,25 m max. hydraulische Reichweite (Arm gestreckt) / max. outreach (horizontal position)



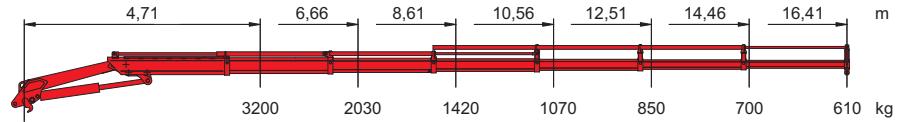
a3 10,31 m max. hydraulische Reichweite (Arm gestreckt) / max. outreach (horizontal position)



a4 12,37 m max. hydraulische Reichweite (Arm gestreckt) / max. outreach (horizontal position)

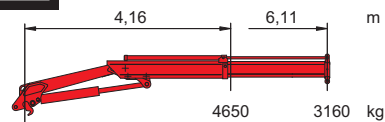


a5 14,43 m max. hydraulische Reichweite (Arm gestreckt) / max. outreach (horizontal position)

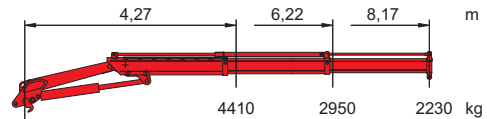


a6 16,49 m max. hydraulische Reichweite (Arm gestreckt) / max. outreach (horizontal position)

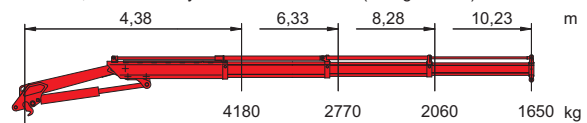
HLK 201 HP



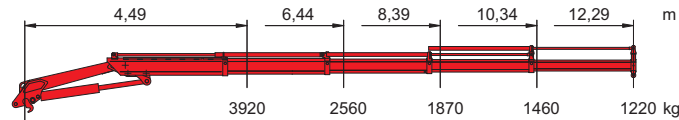
a1 6,19 m max. hydraulische Reichweite (Arm gestreckt) / max. outreach (horizontal position)



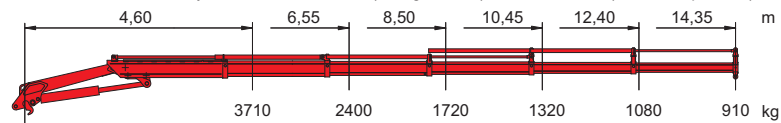
a2 8,25 m max. hydraulische Reichweite (Arm gestreckt) / max. outreach (horizontal position)



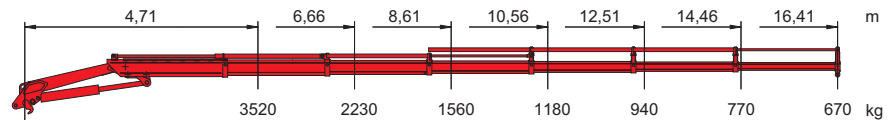
a3 10,31 m max. hydraulische Reichweite (Arm gestreckt) / max. outreach (horizontal position)



a4 12,37 m max. hydraulische Reichweite (Arm gestreckt) / max. outreach (horizontal position)

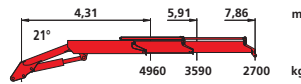


a5 14,43 m max. hydraulische Reichweite (Arm gestreckt) / max. outreach (horizontal position)

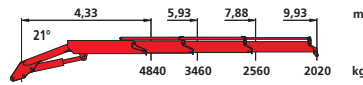


a6 16,49 m max. hydraulische Reichweite (Arm gestreckt) / max. outreach (horizontal position)

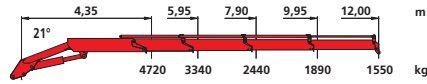
HLK 231 HP



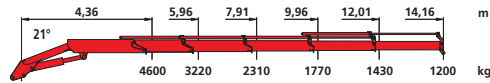
a2 8,00 m max. hydraulische Reichweite (Arm gestreckt) / max. outreach (horizontal position)



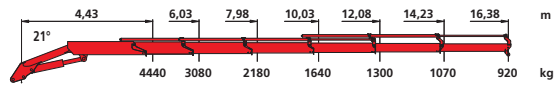
a3 10,10 m max. hydraulische Reichweite (Arm gestreckt) / max. outreach (horizontal position)



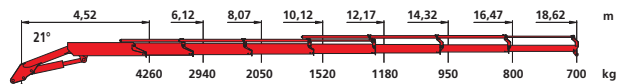
a4 12,15 m max. hydraulische Reichweite (Arm gestreckt) / max. outreach (horizontal position)



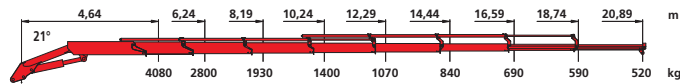
a5 14,30 m max. hydraulische Reichweite (Arm gestreckt) / max. outreach (horizontal position)



a6 16,50 m max. hydraulische Reichweite (Arm gestreckt) / max. outreach (horizontal position)

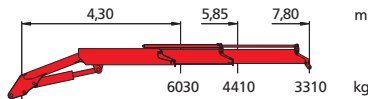


a7 18,80 m max. hydraulische Reichweite (Arm gestreckt) / max. outreach (horizontal position)

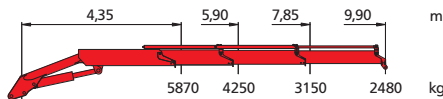


a8 21,00 m max. hydraulische Reichweite (Arm gestreckt) / max. outreach (horizontal position)

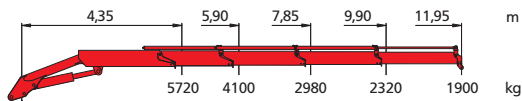
HLK 261



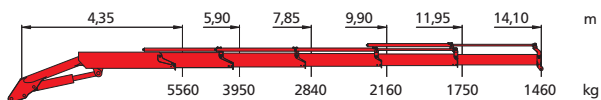
a2 8,00 m max. hydraulische Reichweite (Arm gestreckt) / max. outreach (horizontal position)



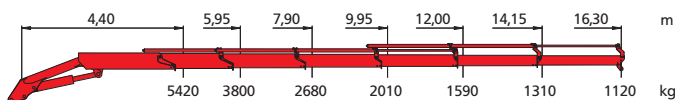
a3 10,10 m max. hydraulische Reichweite (Arm gestreckt) / max. outreach (horizontal position)



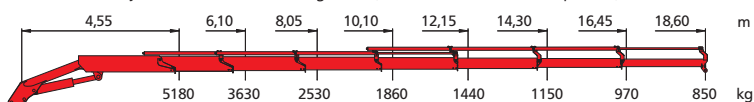
a4 12,15 m max. hydraulische Reichweite (Arm gestreckt) / max. outreach (horizontal position)



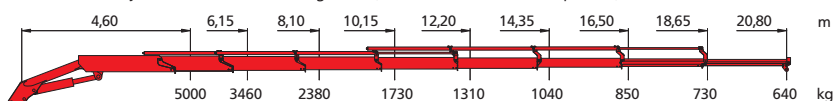
a5 14,30 m max. hydraulische Reichweite (Arm gestreckt) / max. outreach (horizontal position)



a6 16,50 m max. hydraulische Reichweite (Arm gestreckt) / max. outreach (horizontal position)

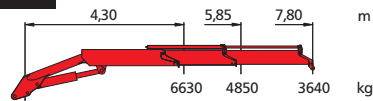


a7 18,80 m max. hydraulische Reichweite (Arm gestreckt) / max. outreach (horizontal position)

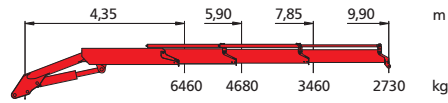


a8 21,00 m max. hydraulische Reichweite (Arm gestreckt) / max. outreach (horizontal position)

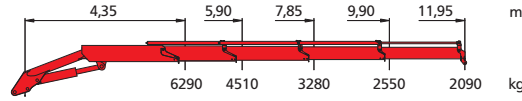
HLK 291 HP



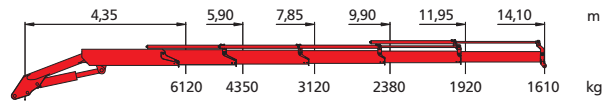
a2 8,00 m max. hydraulische Reichweite (Arm gestreckt) / max. outreach (horizontal position)



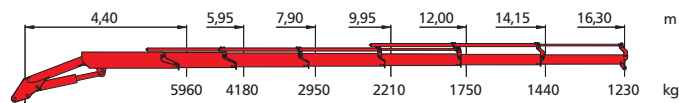
a3 10,10 m max. hydraulische Reichweite (Arm gestreckt) / max. outreach (horizontal position)



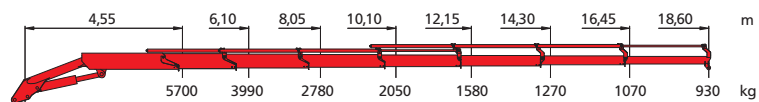
a4 12,15 m max. hydraulische Reichweite (Arm gestreckt) / max. outreach (horizontal position)



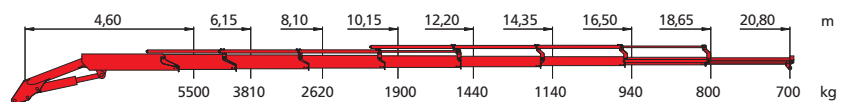
a5 14,30 m max. hydraulische Reichweite (Arm gestreckt) / max. outreach (horizontal position)



a6 16,50 m max. hydraulische Reichweite (Arm gestreckt) / max. outreach (horizontal position)

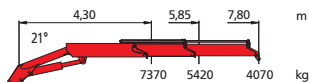


a7 18,80 m max. hydraulische Reichweite (Arm gestreckt) / max. outreach (horizontal position)

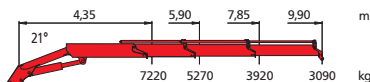


a8 21,00 m max. hydraulische Reichweite (Arm gestreckt) / max. outreach (horizontal position)

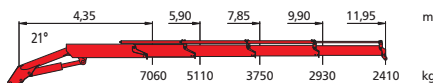
HLK 341 SHP



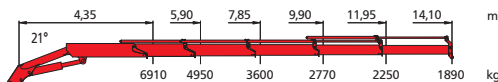
a2 8,00 m max. hydraulische Reichweite (Arm gestreckt) / max. outreach (horizontal position)



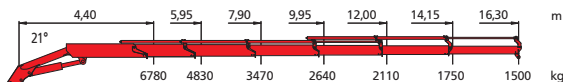
a3 10,10 m max. hydraulische Reichweite (Arm gestreckt) / max. outreach (horizontal position)



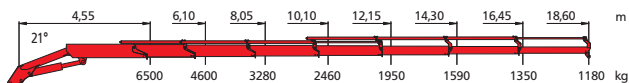
a4 12,15 m max. hydraulische Reichweite (Arm gestreckt) / max. outreach (horizontal position)



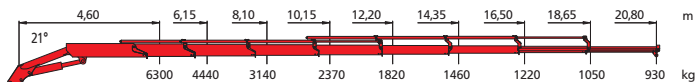
a5 14,30 m max. hydraulische Reichweite (Arm gestreckt) / max. outreach (horizontal position)



a6 16,50 m max. hydraulische Reichweite (Arm gestreckt) / max. outreach (horizontal position)

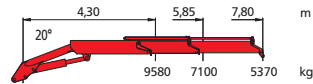


a7 18,80 m max. hydraulische Reichweite (Arm gestreckt) / max. outreach (horizontal position)

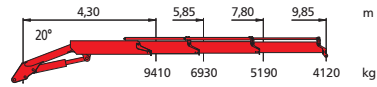


a8 21,00 m max. hydraulische Reichweite (Arm gestreckt) / max. outreach (horizontal position)

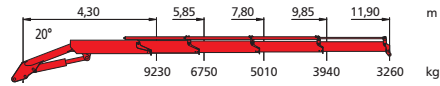
HLK 441 SHP



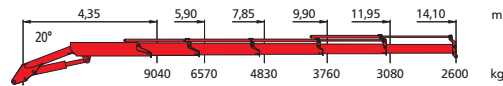
a2 7,95 m max. hydraulische Reichweite (Arm gestreckt) / max. outreach (horizontal position)



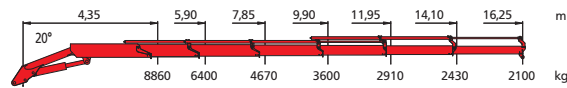
a3 10,00 m max. hydraulische Reichweite (Arm gestreckt) / max. outreach (horizontal position)



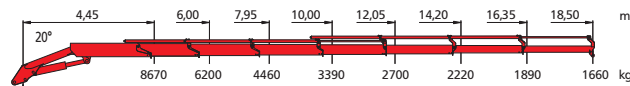
a4 12,05 m max. hydraulische Reichweite (Arm gestreckt) / max. outreach (horizontal position)



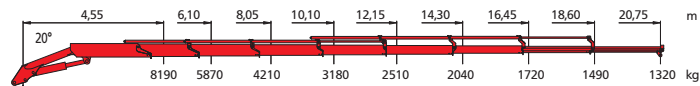
a5 14,25 m max. hydraulische Reichweite (Arm gestreckt) / max. outreach (horizontal position)



a6 16,40 m max. hydraulische Reichweite (Arm gestreckt) / max. outreach (horizontal position)

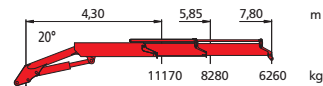


a7 18,65 m max. hydraulische Reichweite (Arm gestreckt) / max. outreach (horizontal position)

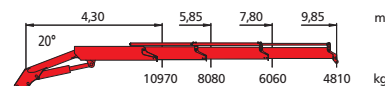


a8 20,90 m max. hydraulische Reichweite (Arm gestreckt) / max. outreach (horizontal position)

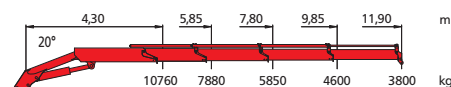
HLK 531 HP



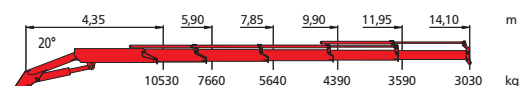
a2 7,95 m max. hydraulische Reichweite (Arm gestreckt) / max. outreach (horizontal position)



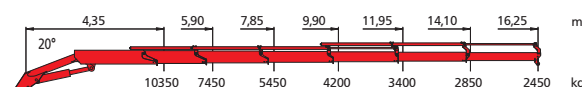
a3 10,00 m max. hydraulische Reichweite (Arm gestreckt) / max. outreach (horizontal position)



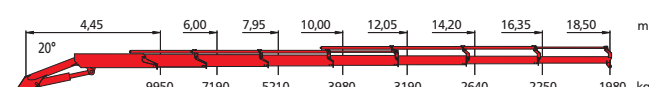
a4 12,05 m max. hydraulische Reichweite (Arm gestreckt) / max. outreach (horizontal position)



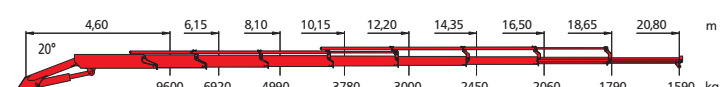
a5 14,25 m max. hydraulische Reichweite (Arm gestreckt) / max. outreach (horizontal position)



a6 16,40 m max. hydraulische Reichweite (Arm gestreckt) / max. outreach (horizontal position)

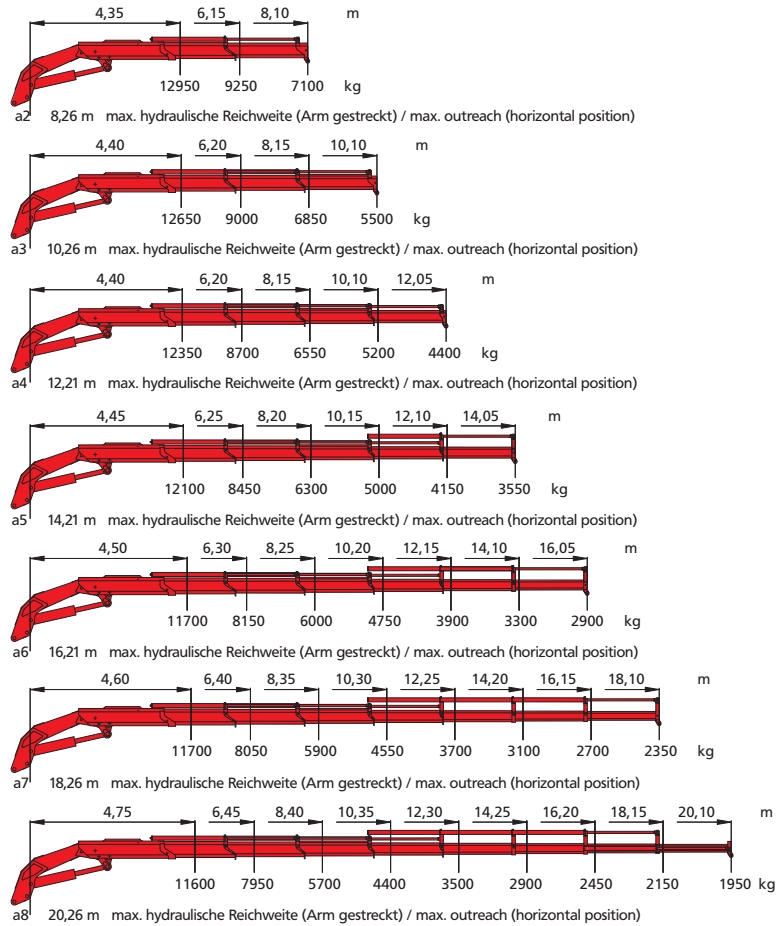


a7 18,65 m max. hydraulische Reichweite (Arm gestreckt) / max. outreach (horizontal position)

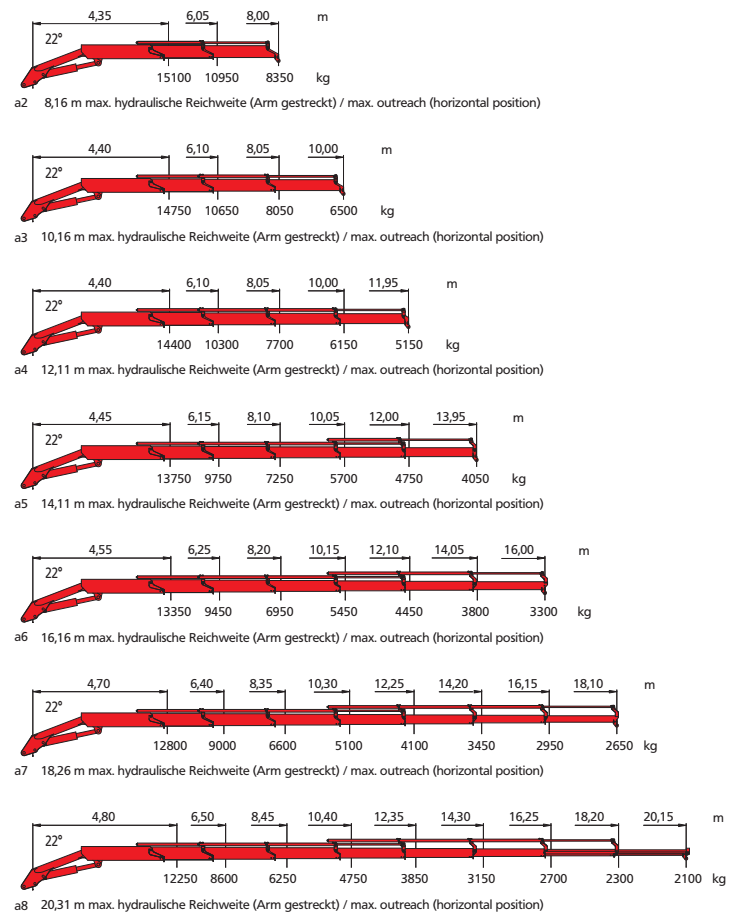


a8 20,95 m max. hydraulische Reichweite (Arm gestreckt) / max. outreach (horizontal position)

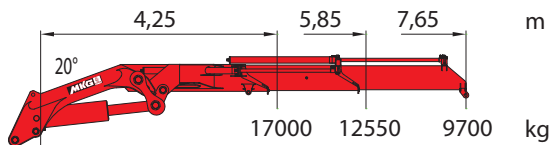
HLK 591 SHP



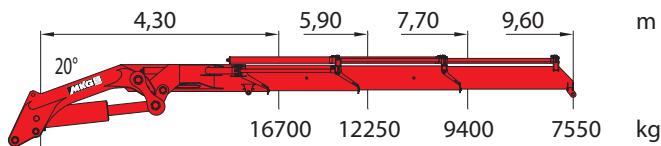
HLK 691 SHP



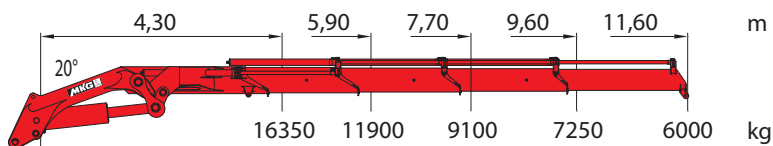
HLK 801 HP



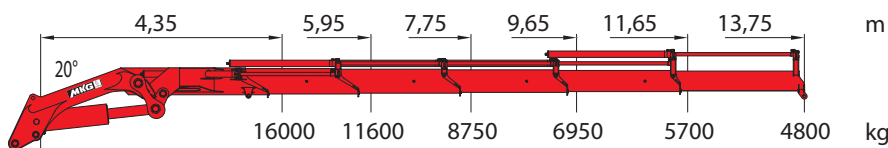
a2 7,80 m max. hydraulische Reichweite (Arm gestreckt / max. outreach (horizontal position))



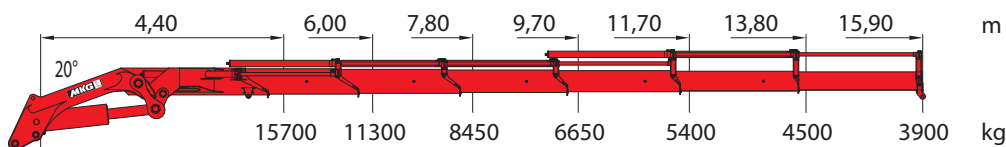
a3 9,75 m max. hydraulische Reichweite (Arm gestreckt / max. outreach (horizontal position))



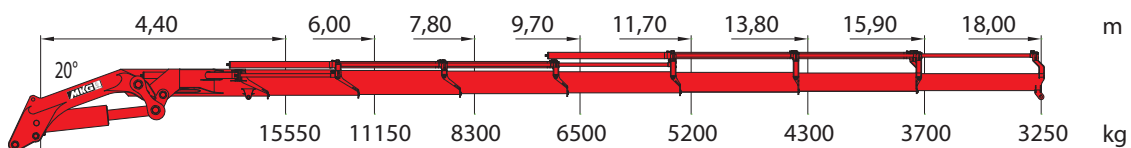
a4 11,75 m max. hydraulische Reichweite (Arm gestreckt / max. outreach (horizontal position))



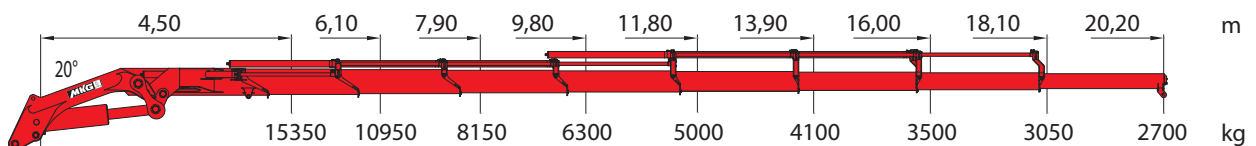
a5 13,90 m max. hydraulische Reichweite (Arm gestreckt / max. outreach (horizontal position))



a6 16,05 m max. hydraulische Reichweite (Arm gestreckt / max. outreach (horizontal position))



a7 18,15 m max. hydraulische Reichweite (Arm gestreckt / max. outreach (horizontal position))



a8 20,35 m max. hydraulische Reichweite (Arm gestreckt / max. outreach (horizontal position))

Technische Daten/Technical Data		HLK 66	HLK 71 HP	HLK 76	HLK 86 HP	HLK 96	HLK 106 HP	HLK 111	HLK 115 HP	HLK 116	HLK 120 HP
Kranbreite (Stützen eingeschoben), Standard Width of crane-supports legs retracted (standard)	m	2,32	2,32	2,32	2,32	2,50	2,50	2,50	2,50	2,50	2,50
Abstützweite, Standard b1 Width between support legs	m	4,60	4,60	4,60	4,60	4,20	4,20	4,20	4,20	3,72	3,72
Kranbreite (Stützen extra weit b2) Width of crane incl. b2 (extra wide stabilizers)	m	2,32	2,32	2,32	2,32	2,50	2,50	2,50	2,50	2,50	2,50
Abstützweite (seitlich extra weit b2) Width betw. supp. legs laterally incl. b2 (extra wide stabilizers)	m	5,13	5,13	5,13	5,13	5,70	5,70	5,70	5,70	5,54	5,54
Hubarmstellung für max. Hubkraft Position of main boom for max. lifting force	+°	16	16	16	16	20	20	4	4	18	18
max. hydr. Auslage (Arm gestreckt) max. hydr. outreach (boom extended)	m	11,30	11,30	11,12	11,12	13,33	13,33	16,45	16,45	11,22	11,22
Höhe in Transportstellung (ab Aufbaurahmen) Height in transport position	m	1,97	1,97	1,97	1,97	2,11	2,11	2,11	2,11	1,99	1,99
max. Betriebsdruck Max. working pressure	bar	260	280	260	280	300	320	290	310	300	320
erforderliche Motorleistung für Konstantpumpe Power requirement of engine for fixed displacement pump	kw/PS kw/PS	14,5/20,0	15,5/21,0	14,5/20,0	15,5/21,0	21,0/27,5	22,5/30,5	20,0/27,0	22,0/30,0	20,0/27,0	22,0/30,0
empfohlene Ölmenge der Konstantpumpe recommended oil volume of fixed displacement pump	l/min l/min	30	30	30	30	40	40	40	40	40	40
Schwenkbereich Slewing range	°	410	410	410	410	410	410	410	410	430	430
Schwenkmoment Slewing moment	Nm Nm	10000	10000	10000	10000	12800	12800	12800	12800	14600	14600
Ölbehälterinhalt Capacity of oil tank	l l	35	35	35	35	47	47	47	47	56	56
Eigengewicht Grundgerät einschließlich ausziehbare Abstützungen Dead weight basic unit including extendable supports	a1 ca. kg	b1/b2	b1/b2	b1/b2	b1/b2	b1/b2	b1/b2	b1/b2	b1/b2	b1/b2	b1/b2
	a1 approx. kg	875/930	875/930	905/960	905/960	1220/1280	1220/1280	1380/1440	1380/1440	1500/1570	1500/1570
	a2 ca. kg	965/1020	965/1020	995/1050	995/1050	1310/1370	1310/1370	1520/1580	1520/1580	1600/1670	1600/1670
	a2 approx. kg	1035/1090	1035/1090	1065/1120	1065/1120	1400/1470	1400/1470	1660/1720	1660/1720	1680/1750	1680/1750
	a3 ca. kg	1125/1150	1125/1150	1125/1180	1125/1180	1490/1550	1490/1550	1760/1820	1760/1820	1760/1830	1760/1830
	a3 approx. kg	-----	-----	-----	-----	-----	-----	-----	-----	-----	-----
	a4 ca. kg	-----	-----	-----	-----	-----	-----	-----	-----	-----	-----
	a4 approx. kg	-----	-----	-----	-----	-----	-----	-----	-----	-----	-----
a5 ca. kg	-----	-----	-----	-----	-----	-----	-----	-----	-----	-----	
a5 approx. kg	-----	-----	-----	-----	-----	-----	-----	-----	-----	-----	
a6 ca. kg	-----	-----	-----	-----	-----	-----	-----	-----	-----	-----	
a6 approx. kg	-----	-----	-----	-----	-----	-----	-----	-----	-----	-----	
a7 ca. kg	-----	-----	-----	-----	-----	-----	-----	-----	-----	-----	
a7 approx. kg	-----	-----	-----	-----	-----	-----	-----	-----	-----	-----	
a8 ca. kg	-----	-----	-----	-----	-----	-----	-----	-----	-----	-----	
a8 approx. kg	-----	-----	-----	-----	-----	-----	-----	-----	-----	-----	
Platzbedarf (Einbaubreite) Mounting space required	m	a1 = 0,67 a2 = 0,67 a3 = 0,67 a4 = 0,67	a1 = 0,67 a2 = 0,67 a3 = 0,67 a4 = 0,67	a1 = 0,67 a2 = 0,67 a3 = 0,67 a4 = 0,67	a1 = 0,67 a2 = 0,67 a3 = 0,67 a4 = 0,67	a1 = 0,91 a2 = 0,91 a3 = 0,91 a4 = 0,91 a5 = 0,91	a1 = 0,91 a2 = 0,91 a3 = 0,91 a4 = 0,91 a5 = 0,91	a1 = 0,82 a2 = 0,82 a3 = 0,82 a4 = 0,82 a5 = 0,82 a6 = 0,82	a1 = 0,82 a2 = 0,82 a3 = 0,82 a4 = 0,82 a5 = 0,82 a6 = 0,82	a1 = 0,79 a2 = 0,79 a3 = 0,79 a4 = 0,79	a1 = 0,79 a2 = 0,79 a3 = 0,79 a4 = 0,79
Platzbedarf (Einbaubreite) Mounting space required	m	Siehe Einzelprospekte! See leaflets for each crane type!									

*einschließlich Hochsitz – including driver's seat

Alle Traglastangaben bis zur maximalen hydr. Reichweite gelten ohne Handstücke
Sämtliche Angaben gewissenhaft, jedoch unverbindlich. Konstruktionsänderungen vorbehalten.
Sämtliche Angaben gelten für Standardgerät ohne Extras, wenn nicht ausdrücklich anders erwähnt!


All lifting capacities for hydr. outreach are to be understood excluding any manual extensions.
All data given without obligation and subject to alteration without notice.
All data are given only for the basic unit with one hydraulic extension without any extras, if not especially mentioned!

Technische Daten/Technical Data		HLK 121	HLK 131 HP	HLK 125	HLK 138 HP	HLK 141	HLK 151 HP	HLK 161	HLK 171 HP	HLK 181	HLK 201 HP
Kranbreite (Stützen eingeschoben), Standard Width of crane-supports legs retracted (standard)	m	2,50	2,50	2,50	2,50	2,50	2,50	2,50	2,50	2,50	2,50
Abstützweite, Standard b1 Width between support legs	m	3,48	3,48	3,48	3,48	4,20	4,20	5,65	5,65	5,65	5,65
Kranbreite (Stützen extra weit b2) Width of crane incl. b2 (extra wide stabilizers)	m	2,50	2,50	2,50	2,50	2,50	2,50	2,50	2,50	2,50	2,50
Abstützweite (seitlich extra weit b2) Width betw. supp. legs laterally incl. b2 (extra wide stabilizers)	m	5,54	5,54	5,54	5,54	5,70	5,70	6,25	6,25	6,25	6,25
Hubarmstellung für max. Hubkraft Position of main boom for max. lifting force	+°	18	18	18	18	9	9	18	18	13	13
max. hydr. Auslage (Arm gestreckt) max. hydr. outreach (boom extended)	m	16,48	16,48	14,53	14,53	16,50	16,50	16,58	16,58	16,49	16,49
Höhe in Transportstellung (ab Aufbaurahmen) Height in transport position	m	2,17	2,17	2,22	2,22	2,22	2,22	2,35	2,35	2,39	2,39
max. Betriebsdruck Max. working pressure	bar	280	300	300	320	290	310	280	300	285	300
erforderliche Motorleistung für Konstantpumpe Power requirement of engine for fixed displacement pump	kw/PS kw/PS	19,0/26,0	21,0/28,5	21,0/28,5	22,5/30,5	20,0/27,0	22,0/30,0	19,0/26,0	21,0/28,5	19,5/26,5	20,5/27,5
empfohlene Ölmenge der Konstantpumpe recommended oil volume of fixed displacement pump	l/min l/min	40	40	40	40	40	40	40	40	40	40
Schwenkbereich Slewing range	°	410	410	410	410	410	410	410	410	430	430
Schwenkmoment Slewing moment	Nm Nm	14600	14600	16600	16600	16600	16600	18500	18500	24500	24500
Ölbehälterinhalt Capacity of oil tank	l l	50	50	50	50	47	47	50	50	50	50
Eigengewicht Grundgerät einschließlich ausziehbare Abstützungen Dead weight basic unit including extendable supports	a1 ca. kg	b1/b2	b1/b2	b1/b2	b1/b2	b1/b2	b1/b2	b1/b2	b1/b2	b1/b2	b1/b2
	a1 approx. kg	1500/1580	1500/1580	1780/1860	1780/1860	1480/1540	1480/1540	2080/2100	2080/2100	2380/2420	2320/2420
	a2 ca. kg	1660/1740	1660/1740	1900/1980	1900/1980	1620/1680	1620/1680	2240/2260	2240/2260	2290/2580	2490/2580
	a2 approx. kg	1800/1880	1800/1880	2020/2100	2020/2100	1755/1815	1755/1815	2380/2400	2380/2400	2640/2370	2640/2730
	a3 ca. kg	1940/2020	1940/2020	2140/2220	2140/2220	1860/1920	1860/1920	2520/2540	2520/2540	2790/2880	2790/2880
	a3 approx. kg	2060/2140	2060/2140	2240/2320	2240/2320	1955/2015	1955/2015	2640/2660	2640/2660	2930/3020	2930/3020
	a4 ca. kg	2180/2260	2180/2260	2440/2520	2440/2520	2040/2100	2040/2100	2760/2780	2760/2780	3060/3150	3060/3150
	a4 approx. kg	-----	-----	-----	-----	-----	-----	-----	-----	-----	-----
a5 ca. kg	-----	-----	-----	-----	-----	-----	-----	-----	-----	-----	
a5 approx. kg	-----	-----	-----	-----	-----	-----	-----	-----	-----	-----	
a6 ca. kg	a1 = 0,89	a1 = 0,89	a1 = 0,87	a1 = 0,87	a1 = 0,87	a1 = 0,82	a1 = 0,82	a1 = 0,93	a1 = 0,93	a1 = 0,96	a1 = 0,96
a6 approx. kg	a2 = 0,89	a2 = 0,89	a2 = 0,87	a2 = 0,87	a2 = 0,87	a2 = 0,82	a2 = 0,82	a2 = 0,93	a2 = 0,93	a2 = 0,96	a2 = 0,96
a7 ca. kg	a3 = 0,89	a3 = 0,89	a3 = 0,87	a3 = 0,87	a3 = 0,87	a3 = 0,82	a3 = 0,82	a3 = 0,93	a3 = 0,93	a3 = 0,96	a3 = 0,96
a7 approx. kg	a4 = 0,89	a4 = 0,89	a4 = 0,92	a4 = 0,92	a4 = 0,92	a4 = 0,82	a4 = 0,82	a4 = 0,93	a4 = 0,93	a4 = 0,96	a4 = 0,96
a8 ca. kg	a5 = 0,97	a5 = 0,97	a5 = 1,04	a5 = 1,04	a5 = 1,04	a5 = 0,82	a5 = 0,82	a5 = 1,10	a5 = 1,10	a5 = 1,04	a5 = 1,04
a8 approx. kg	a6 = 0,97	a6 = 0,97	a6 = 1,04	a6 = 1,04	a6 = 1,04	a6 = 0,82	a6 = 0,82	a6 = 1,10	a6 = 1,10	a6 = 1,04	a6 = 1,04

Siehe Einzelprospekte! See leaflets for each crane type!

*einschließlich Hochsitz – including driver's seat

Alle Traglastangaben bis zur maximalen hydr. Reichweite gelten ohne Handstücke
 Sämtliche Angaben gewissenhaft, jedoch unverbindlich. Konstruktionsänderungen vorbehalten.
 Sämtliche Angaben gelten für Standardgerät ohne Extras, wenn nicht ausdrücklich anders erwähnt!
 All lifting capacities for hydr. outreach are to be understood excluding any manual extensions.
 All data given without obligation and subject to alteration without notice.
 All data are given only for the basic unit with one hydraulic extension without any extras, if not especially mentioned!

Technische Daten/Technical Data		HLK 231 HP	HLK 261	HLK 291 HP	HLK 341 SHP	HLK 441 SHP	HLK 531 HP	HLK 591 SHP	HLK 691 SHP	HLK 801 HP	
Kranbreite (Stützen eingeschoben), Standard Width of crane-supports legs retracted (standard)	m	2,54	2,53	2,53	2,54	2,51	2,51	2,55	2,55	2,55	
Abstützweite, Standard b1 Width between support legs	m	5,61	5,63	5,63	5,61	7,80	7,80	8,62	8,61	8,55	
Kranbreite (Stützen extra weit b2) Width of crane incl. b2 (extra wide stabilizers)	m	2,54	---	---	2,54	---	---	---	---	---	
Abstützweite (seitlich extra weit b2) Width betw. supp. legs laterally incl. b2 (extra wide stabilizers)	m	6,61	6,63	6,63	b2/b2a 6,61/7,41	---	---	---	---	---	
Hubarmstellung für max. Hubkraft Position of main boom for max. lifting force	°	21	21	21	21	20	20	21	22	20	
max. hydr. Auslage (Arm gestreckt) max. hydr. outreach (boom extended)	m	21,08	21,00	21,00	21,00	20,90	20,95	20,26	20,31	20,35	
Höhe in Transportstellung (ab Aufbaurahmen) Height in transport position	m	2,35	2,30	2,30	2,30	2,49	2,49	2,43	2,50	2,50	
Max. Betriebsdruck Max. working pressure	bar	300	290	310	340	330	330	320	325	345	
erforderliche Motorleistung für Konstantpumpe Power requirement of engine for fixed displacement pump	kw/PS kw/PS	26/35,5	28,0/38,0	30,0/41,0	30,0/41,0	46,0/63,0	46,0/63,0	42,0/57,0	51,0/69,0	60,0/82,0	
empfohlene Ölmenge der Konstantpumpe recommended oil volume of fixed displacement pump	l/min l/min	50	55	55	55	80	80	80	90	100	
Schwenkbereich Slewing range	° °	400	endlos endless	endlos endless	endlos endless	endlos endless	endlos endless	endlos endless	endlos endless	endlos endless	
Schwenkmoment Slewing moment	Nm Nm	30000	33300	33300	33300	41000 56000	41000 56000	75000	75000	45000 75000	
Ölbehälterinhalt Capacity of oil tank	l l	85	85	85	85	200	200	200	200	400	
	a1	ca.	---	---	b1/b2 b2a	---	---	---	---	---	
	a1	approx. kg	---	---	---	---	---	---	---	---	
	a2	ca. kg	2650/2790	3125/3235	3125/3235	3125/3235	4100	4400	5350	6100	7220
	a2	approx. kg	---	---	---	---	---	---	---	---	
	a3	ca. kg	2810/2900	3330/3440	3330/3440	3330/3440	4335	4635	5600	6330	7560
	a3	approx. kg	---	---	---	---	---	---	---	---	
	a4	ca. kg	2950/3090	3530/3640	3530/3640	3530/3640	4565	4865	5330	6640	7900
	a4	approx. kg	---	---	---	---	---	---	---	---	
a5	ca. kg	3100/3240	3720/3830	3720/3830	3720/3830	4800	5100	6050	6930	8230	
a5	approx. kg	---	---	---	---	---	---	---	---		
a6	ca. kg	3230/3370	3900/4010	3900/4010	3900/4010	5000	5300	6260	7200	8560	
a6	approx. kg	---	---	---	---	---	---	---	---		
a7	ca. kg	3350/3490	4070/4180	4070/4180	4070/4180	5195	5495	6570	7580	8855	
a7	approx. kg	---	---	---	---	---	---	---	---		
a8	ca. kg	3460/3600	4225/4335	4225/4335	4225/4335	5380	5680	6750	7830	9125	
a8	approx. kg	---	---	---	---	---	---	---	---		
Platzbedarf (Einbaubreite) Mounting space required	m	a2 = 0,99 a3 = 1,03 a4 = 1,07 a5 = 1,07 a6 = 0,99 a7 = 1,07 a8 = 1,08	a2 = 1,03 a3 = 1,03 a4 = 1,07 a5 = 1,07 a6 = 1,07 a7 = 1,07 a8 = 1,14	a2 = 1,03 a3 = 1,03 a4 = 1,07 a5 = 1,07 a6 = 1,07 a7 = 1,07 a8 = 1,14	a2 = 1,03 a3 = 1,03 a4 = 1,07 a5 = 1,07 a6 = 1,07 a7 = 1,07 a8 = 1,14	a2 = 1,33 a3 = 1,36 a4 = 1,36 a5 = 1,36 a6 = 1,36 a7 = 1,36 a8 = 1,44	a2 = 1,33 a3 = 1,36 a4 = 1,36 a5 = 1,36 a6 = 1,36 a7 = 1,36 a8 = 1,44	a2 = 1,40 a3 = 1,40 a4 = 1,46 a5 = 1,46 a6 = 1,46 a7 = 1,60 a8 = 1,62	a2 = 1,55 a3 = 1,55 a4 = 1,55 a5 = 1,55 a6 = 1,55 a7 = 1,57 a8 = 1,59	a2 = 1,64 a3 = 1,71 a4 = 1,71 a5 = 1,71 a6 = 1,71 a7 = 1,71 a8 = 1,78	
Platzbedarf (Einbaubreite) Mounting space required	m	Siehe Einzelprospekte! See leaflets for each crane type!									

*einschließlich Hochsitz – including driver's seat

Alle Traglastangaben bis zur maximalen hydr. Reichweite gelten ohne Handstücke
 Sämtliche Angaben gewissenhaft, jedoch unverbindlich. Konstruktionsänderungen vorbehalten.
 Sämtliche Angaben gelten für Standardgerät ohne Extras, wenn nicht ausdrücklich anders erwähnt!

All lifting capacities for hydr. outreach are to be understood excluding any manual extensions.
 All data given without obligation and subject to alteration without notice.
 All data are given only for the basic unit with one hydraulic extension without any extras, if not especially mentioned!



HLK 120 HP



HLK 161



HLK 341 SHP



HLK 441 SHP



HLK 531 HP



HLK 801 HP

Sämtliche Angaben sind gewissenhaft, jedoch unverbindlich. Konstruktionsänderungen vorbehalten.
All data given without obligation and subject to alteration without notice.

08.17



MKG Maschinen- & Kranvertrieb GmbH

Am Gehölz 8 · D-21256 Handeloh

ph. +49 (0) 4188.8998304 · fax +49 (0) 4188.8998306

e-mail: info@mkg-export.de · www.mkg-export.com